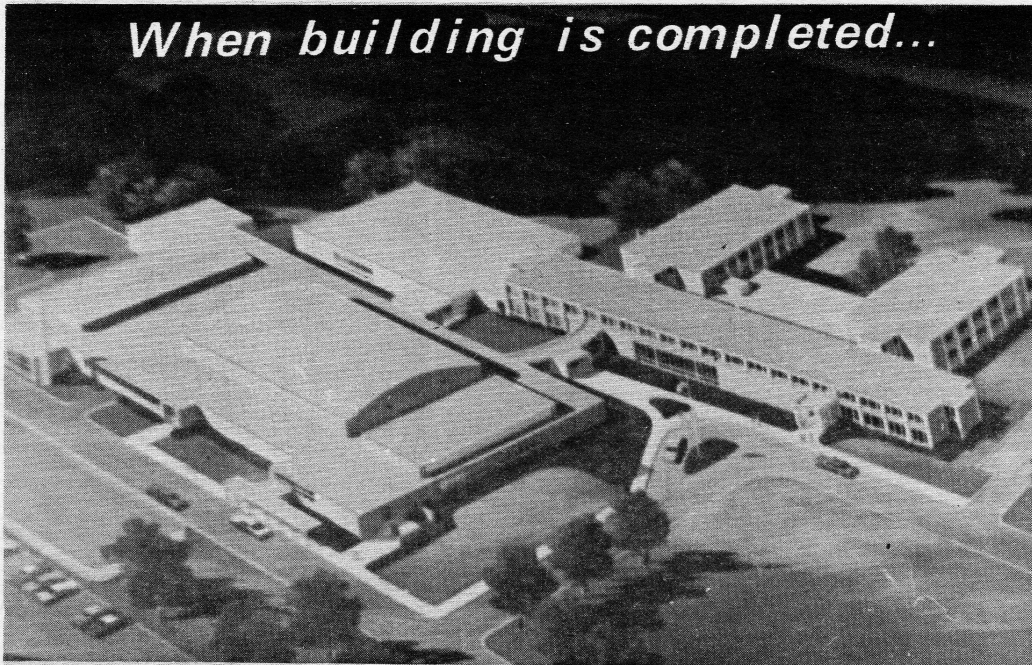


*When building is completed...*



An artist's conception of Ramsey when construction is finished.

## How construction was planned

# People, dollars decide

The final plans for Ramsey construction are the product teacher wants, consultant estimates, and financial limitations.

First plans for the construction began in July, 1967. Superintendent Dr. Lloyd Neilson recommended to the school board that the University of Minnesota Bureau

of Field Studies conduct a survey of building capacities and projected enrollments.

The Bureau of Field Studies serves the function of a modern day seer, pinpointing present problems and predicting future ones.

If, for example, a population study is to be made, the Bureau will do the following: tabulate population trends, record building sites, study enrollments, take birth rates, and program all the information through a computer. The Bureau then can predict what will happen in the District for the next few years.

Teachers were also asked by the superintendent to look at their buildings in terms of what was needed for what was happening in them.

Teachers and department heads met frequently and pooled ideas. They circulated lists among themselves to which ideas were added, subtracted, and changed.

Several groups of teachers from each department visited other schools where they saw new building concepts. From these teachers came ideas which were weeded through, condensed, and presented to Dr. Neilson.

"By the spring of 1968," Neilson said in a recent interview, "we had identified not only our needs for enrollment but our needs for learning."

At this point the board decided that a bond issue was needed. The PTA Area Council of Buildings and Finance was called in to review the plans and drum up support for the issue.

Richard Tedroe, Building Council chairman at that time, said, "The Council acted as kind of a go-between between the Board and the neighbors on the street. Members of the council appeared at PTA meetings to explain the bond issue and plead for it." (The school board is prohibited from doing this.)

After the bond issue passed, the architectural firm of Setter, Leach, and Lindstrom was hired, and drew the first schematic diagrams. Plans were discussed, thrown out, revised, and added to by teachers and administrators. In May of 1969 it was evident

for enough money to cover all of the teachers' requests. The bond issue had been passed for \$1,145,375; teachers requests totalled \$1,778,000, or about 50% over what the bond issue has figured.

Building costs had risen 16 per cent from Sept. 1968 to April 1969. The bond issue had only allowed for a 5 per cent increase.

According to Ramsey drama teacher Charles Hanily, "The architects found that their preliminary costs had under-estimated the real cost. Architects misunderstood the cost of some pre-formed concrete sidewalls they had planned to install in the drama area."

Teacher requests for a large group instruction area and a "little theater" were among those eliminated from the building plans.

"The problem was lack of money," said Hanily. "It became necessary to decide priorities. They trimmed back all the other areas, and felt it was no longer feasible to build the large group instruction area."

### Additions planned for high school

- \* Seven new science rooms, with collapsable partitions which can be made into three large rooms and a supplementary study area for students.

- \* Seven new social studies rooms, four of which will have direct access to the library.

- \* Three additional corridors to improve traffic flow.

- \* One business education room.

- \* Two art teaching stations, two rooms in open space.

- \* An expanded library, including two conference rooms, two audiovisual viewing rooms, and other improvements. There will also be a typing room for general use.

- \* A remodeled cafeteria, to have one-third of it partitioned off for a student lounge.

# Faculty de building 'c

by Walter Hard

Many faculty members will find when building construction is completed that they do not have the instruction areas they had requested and believed they would get as of last May.

In addition to deploring cuts made in their areas, many faculty members are uncertain as to what cuts have actually been made.

"My reaction is one of disappointment," said Charles Hanily, drama teacher. "Quite a bit of the original proposal for this drama stage area has been cut."

"I've heard 13 different rumors about what's going on out there. . . ."

"This school needs a large group instruction area, and we need a theater. It's not just drama that benefits from it. Everybody benefits from it. In the long run, I think the omission of the area will have a detrimental effect on any really innovative plan. There are some changes that simply cannot be made without the area."

Mauritz Anderson, biology teacher, was unsure about what cuts had been made in his area.

"We can't even hypothesize what effect the cuts will have until we

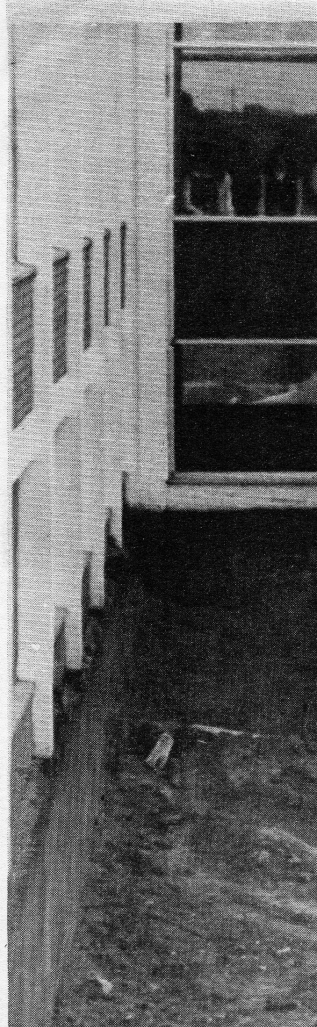
## Build invade Ramsey

An in-depth report on

Reporters:

Marge Charmoli  
Keith Crane  
Walter Hard  
Bob Meek

Photo



A corner of construction



Teamwork is